

### IMA attendance area, proximity to IMA building analysis

The demographics of students living within a 1-mile and 1.5-mile radius surrounding Isthmus Montessori Academy (IMA) are similar to those of students living in the IMA attendance area overall. The area within the 1-mile radius of IMA has a considerably lower proportion of Hispanic/Latino students than the IMA attendance area overall; consequently, all other racial groups are represented in greater proportions than in the IMA attendance area overall.

Note that these buffers do not equate to the 1.5 mile usual travel route (walk or drive) distance requirement for district provided transportation assistance.

	Within 1 mile buffer	Between 1 and 1.5 mile buffer	IMA attendance area overall	MMSD overall
Area overall	826	739	3405	21154
<b>Race/ethnicity</b>				
Asian	11%	9%	9%	9%
Black or African American	28%	24%	24%	17%
Hispanic/Latino	14%	25%	24%	22%
Multiracial	13%	10%	11%	9%
White	34%	32%	32%	42%
<b>Other demographics</b>				
Low-income	69%	73%	67%	51%
English Language Learner	25%	34%	33%	29%
Receiving special education	14%	15%	15%	13%

\* Demographics are for MMSD students enrolled in 4K-9<sup>th</sup> grade during the 2016-17 Third Friday of September count date

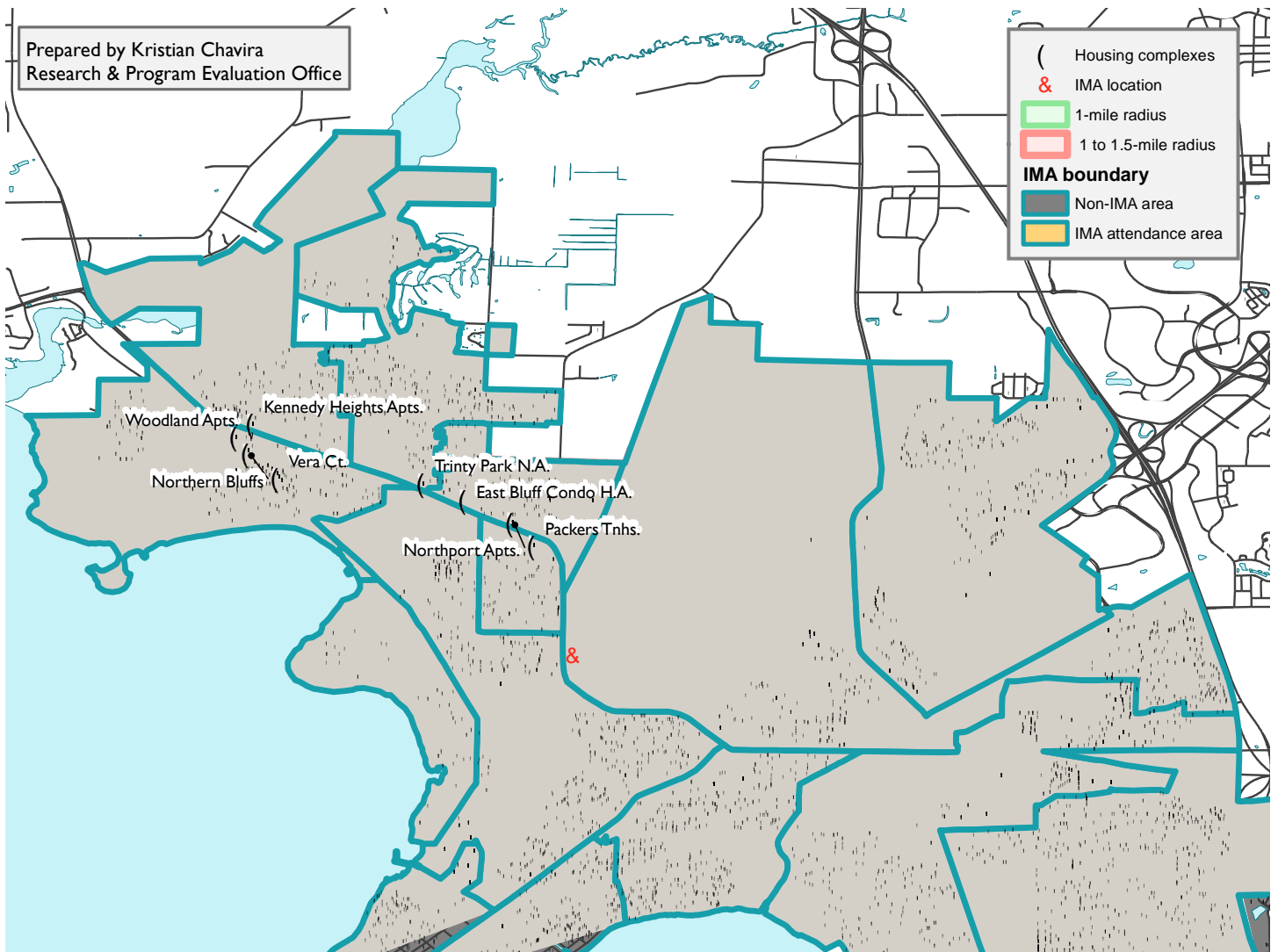


Figure 1: Proximity to IMA, 4K-9<sup>th</sup> grade students represented by small black points